

LEASEHOLD



Flat - Purpose Built (EPC Rating: C)

532A KINGSBURY ROAD, LONDON, NW9
9HH

£250,000



HAYMILLS
Expertise Experience Engagement



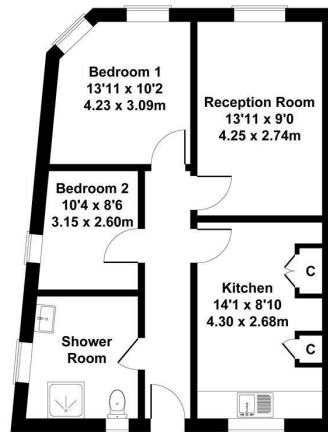
CASH BUYERS ONLY - 51 YEAR LEASE

Presenting for sale this 2 bedroom flat set above shops and situated on a prime location on Kingsbury Road with its multiple shopping, eateries and bus services and within minutes to Kingsbury Station and the greenery of Roe Green. The property benefits from double glazing, gas central heating and is offered with vacant possession. Due to its location, this property is ideal for both first time buyers and investors alike



532A Kingsbury Road NW9

Approximate Gross Internal Area
570 sq ft - 53 sq m



Not to Scale. Produced by The Plan Portal 2026
For Illustrative Purposes Only.

LEASE: 70 YEARS (APPROX)

SERVICE CHARGE: £1,000 PA (APPROX)

GROUND RENT: £30 PA

COUNCIL TAX: BAND C

Energy Performance Graph

Energy Efficiency Rating		
	Current	Potential
Very energy efficient - lower running costs		
(92 plus) A		
(81-91) B		
(69-80) C		
(55-68) D		
(39-54) E		
(21-38) F		
(1-20) G		
Not energy efficient - higher running costs		
England & Wales		
EU Directive 2002/91/EC		

Call us on

0208 904 8822

info@haymills.uk

Agents Note: Whilst every care has been taken to prepare these particulars, they are for guidance purposes only. All measurements are approximate and are for general guidance purposes only and whilst every care has been taken to ensure their accuracy, they should not be relied upon and potential buyers are advised to recheck the measurements.



HAYMILLS
Expertise Experience Engagement